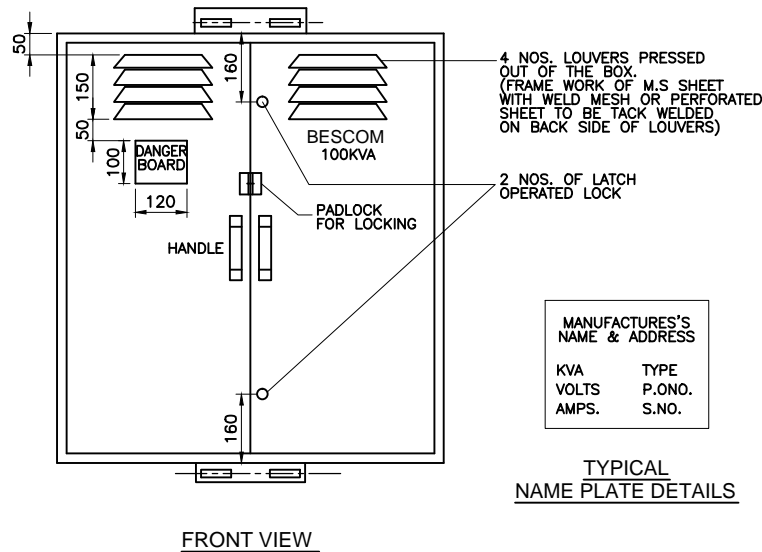


BILL OF MATERIALS

SL NO	PARTICULARS	QUANTITY	REFERENCE STANDARD
1	MOLDED CASE CIRCUIT BREAKER 60 KA (REPUTED MAKE) 160A	2 NOS.	IS-8828 & IS-13947
2.	EC GRADE EQ ALUMINUM BUS BARS WITH PVC INSULATED TOUGHENED/COMPOUND INSULATION COATING		
	a) MAIN BUS BARS 50x6mm	3 NOS.	
	b) CONNECTION LINKS 20x18mm	12 NOS.	
3.	BUS SUPPORT INSULATORS 1.1KV CLAES	12 NOS.	
4.	M.S SHEET 2mm		
5.	PAINT: ADMIRAL GREY		IS-5
6.	DANGER BOARD 120x10mm	1 NO.	IS-2551
7.	BRASS BOLTS & NUTS FOR TERMINATION	12 NOS.	
8.	ALU-CU. BI METALLIC WASHERS	24 NOS.	
9.	SPRING WASHERS.	12 NOS.	


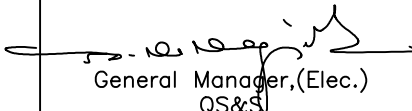

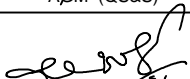
NOTES:-

- ALL DIMENSIONS ARE IN mm ONLY.
- BOX SHALL BE MADE OUT OF 2mm SHEET, PROTECTION AS PER IP-53.
- THE DOOR SHALL HAVE INTERVAL LOCKING ARRANGEMENT WITH SPRING LOADED LATCH OPERATED BY A COMMON KEY FOR ALL THE BOXES.
- EARTHING MUST BE DISTINCTLY INDICATED BY METALLIC LABEL OR EMBOSSED.
- DIMENSIONS ARE CRITICAL, SUBJECT TO SLIGHT ALTERATIONS.
- CABLE ENTRIES AND OUTLETS ARE OF 50mm ϕ HOLES COVERED WITH 2mm THICK M.S. SHEET SQUARE PLATES.
- RIGOROUS RUST PROOFING PROCESS (3 IN 1 TREATMENT), DEGREASING, DERUSTING AND PHOSPHATING SHALL BE CARRIED OUT ON THE METAL BEFORE AND AFTER FABRICATION OF THE BOX AND BEFORE SPRAY PAINTING.
- ALUMINUM LUGS SHOWN ARE NOT IN THE SCOPE OF SUPPLY.
- THE DOORS SHALL BE OF SELF CLOSING TYPE WITH SPRING ARRANGEMENT.



TYPICAL NAME PLATE DETAILS

MANUFACTURE'S NAME & ADDRESS	
KVA	TYPE
VOLTS	P.ONO.
AMPS.	S.NO.

	Signatures	All dimensions are in mm unless otherwise stated.	<div> BESCOM</div> <div>Approved:  General Manager, (Elec.) QS&S</div> <div>DRG.NO.BESCOM/GM/QS&S/58 REV-002 DATED:24-11-2018</div>
Chd	 AGM (QS&S)	DETAILS OF L.T DISTRIBUTION BOX SUITABLE FOR 100 KVA TRANSFORMERS USING MCCB	
Sub	 DGM (QS&S)		
SCALE: N.T.S			